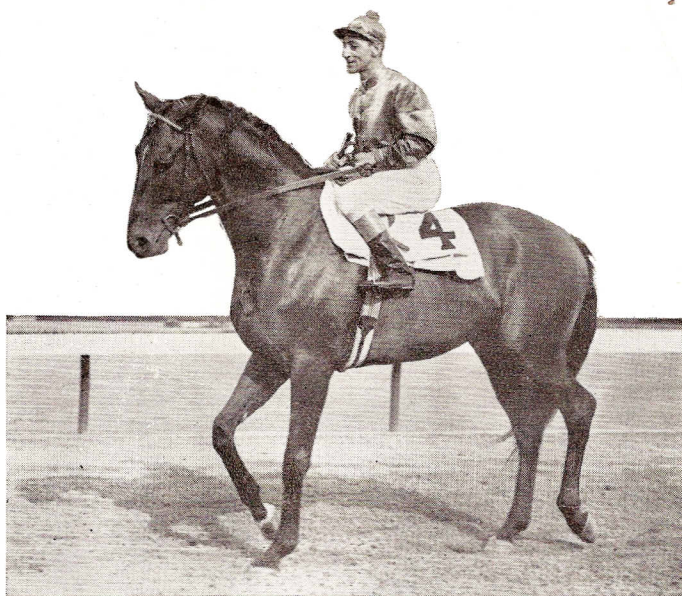


NASHUA

Four-year-old bay colt by Nasrullah—Segula

Breeder—Belair Stud, Inc.

Owner—Leslie Combs, 2nd Trainer—James Fitzsimmons



RACING RECORD

YEAR	STARTS	FIRST	SECOND	THIRD	EARNINGS
1956	8	5	0	0	\$291,550
1955	12	10	1	1	752,550
1954	8	6	2	0	192,865

Total \$1,236,965

BACKGROUND

Leslie Combs, 2nd represents the syndicate which purchased NASHUA from the estate of William Woodward, Jr. for a record \$1,251,200. In addition to Combs the other members of the combine are Christopher J. Devine, one of the largest brokers of Government bonds in the country; John W. Hanes, chairman of the executive committee of the Mathieson Chemical Company and chairman of the board of the Greater New York Association; Peter A. B. Widener, prominent breeder; Harry M. Warner, president of Warner Brothers; and Robert W. McIlvain, Kentucky breeder. NASHUA runs in the orange and blue silks of Combs.

NASHUA is the leading money-winning horse of all time with earnings of \$1,236,965. Prior to this season NASHUA raced for the Belair Stud and was sold to his present owners last year upon the death of William Woodward, Jr. for a record price of \$1,251,200.

1954

Date	Track	Race	Dist.	Wt.	Fin.	Time	Odds	Value
May 5	Belmont Park	Maiden Race	4 1/2 fur w.c.	118	1 - 3	:52 3/5 fst	8 1/2-1	\$2,600
May 12	Belmont Park	Juvenile Stakes	5 fur w.c.	117	1 - 1/2	:58 fst	3-1e	12,150
May 19	Garden State Park	Cherry Hill Stakes	5 fur	119	2 - nk	:58 3/5 fst	38-10	3,000
Aug 21	Saratoga	Grand Union Hotel Stakes	6 fur	122	1 - 1 3/4	1:12 2/5 fst	2 3/4-1e	18,550
Aug 28	Saratoga	Hopeful Stakes	6 1/2 fur	122	1 - nk	1:17 4/5 fst	11-20e	57,050
Sep 21	Aqueduct	Cowdin Stakes	6 1/2 fur	124	2 - 1 1/2	1:16 fst	25-20	5,000
Oct 1	Belmont Park	Anticipation Purse	6 fur w.c.	118	1 - 1	1:08 1/5 fst	21-20	6,500
Oct 9	Belmont Park	Futurity Stakes	6 1/2 fur w.c.	122	1 - h	1:15 3/5 fst	13-20	88,015
Totals (8)								\$192,865

1955

Feb 21	Hialeah Park	Spanish Moss Purse	1 1-16 miles	126	1 - 1 1/2	1:44 1/5 fst	*	\$4,875
Feb 26	Hialeah Park	Flamingo Stakes	1 1/8 miles	122	1 - 1 1/2	1:49 3/5 fst	7-10	104,600
Mar 26	Gulfstream Park	Florida Derby	1 1/8 miles	122	1 - nk	1:53 1/5 sly	19-20	100,000
Apr 23	Jamaica	Wood Memorial	1 1/8 miles	126	1 - nk	1:50 3/5 fst	11-10	75,100
May 7	Churchill Downs	Kentucky Derby	1 1/4 miles	126	2 - 1 1/2	2:01 4/5 fst	13-10	25,000
May 28	Pimlico	Preakness Stakes	1 3-16 miles	126	1 - 1	1:54 3/5 fst	3-10	67,550
June 11	Belmont Park	Belmont Stakes	1 1/2 miles	126	1 - 9	2:29 fst	3-20	83,700
July 2	Aqueduct	Dwyer Stakes	1 1/4 miles	126	1 - 5	2:03 4/5 fst	*	37,200
July 16	Arlington Park	Arlington Classic	1 mile	126	1 - 1/2	1:35 1/5 fst	3-10	91,675
Aug 31	Washington Park	Washington Park Match Race	1 1/4 miles	126	1 - 6 1/2	2:04 1/5 gd	6-5	100,000
Sep 24	Belmont Park	Sysonby Stakes	1 1/8 miles	121	3 - 1 3/4	1:49 1/5 sly	2-3	10,000
Oct 15	Belmont Park	Jockey Club Gold Cup	2 miles	119	1 - 5	3:24 4/5 sly	1-4	52,850
Totals (12)								\$752,550

* Special race, no betting.

1956

Feb 18	Hialeah Park	Widener Handicap	1 1/4 miles	127	1 - h	2:02 fst	2-5	92,600
Mar 17	Gulfstream Park	Gulfstream Park Handicap	1 1/4 miles	129	5 - 7	2:00 3/5 fst	7-10	2,500
May 5	Jamaica	Grey Lag Handicap	1 1/8 miles	128	1 - h	1:50 3/5 fst	19-20	37,100
May 19	Garden State Park	Camden Handicap	1 1/8 miles	129	1 - 2	1:49 1/5 fst	4-10	22,750
May 30	Belmont Park	Metropolitan Handicap	1 mile	130	4 - 3/4	1:35 fst	10-13	2,500
June 30	Belmont Park	Carter Handicap	7 fur	130	7 - 3/2	1:23 1/5 fst	11-10	
July 4	Belmont Park	Suburban Handicap	1 1/4 miles	128	1 - 1 1/4	2:00 4/5 fst	6-5	55,900
July 14	Monmouth Park	Monmouth Handicap	1 1/4 miles	129	1 - 3 1/2	2:02 4/5 my	3-10	78,200